

LED SMD



Lead-Free Parts

LWK9553/TR1/A-1-A02

DATA SHEET

DOC. NO : QW0905-LWK9553/TR1/A-1-A02#DATE : 29 -Mar - 2010



Features:

- 1. Top view cool white LED.
- 2. SMT package.
- 3. Leadframe package with individual 2 pin.
- 4. Wide viewing angle.
- 5. Soldering methods: IR reflow soldering.
- 6. Feature of the device: more light due to higher optical efficiency; extremely wide viewing angle; ideal for backlighting and coupling in light guide.
- 7. Pb free

Descriptions:

The 9553 SMD has wide viewing angle, low power consumption and white LEDs are devices which are materialized by combining blue LEDs and special phosphors. This feature makes the LED ideal for light guide application.

Applications:

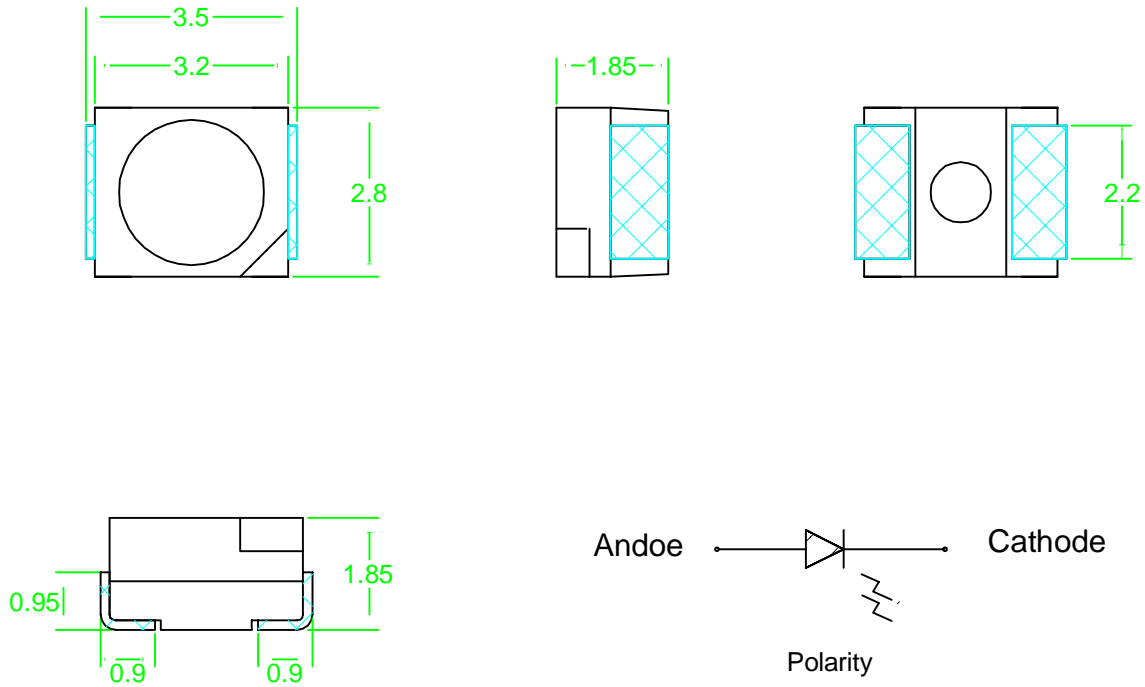
- 1. LCD back light.
- 2. Mobile phones.
- 3. Indicators.
- 4. Switch lights.
- 5. Lighting.

Device Selection Guide:

PART NO	MATERIAL	COLOR	
		Emitted	Lens
LWK9553/TR1/A-1-A02	InGaN/GaN	White	Yellow Diffused

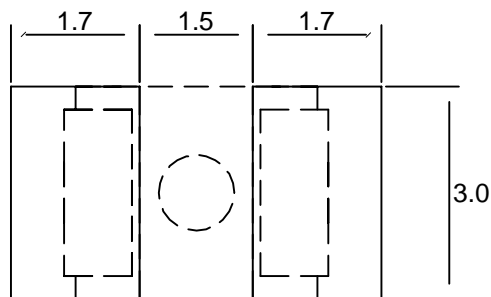


Package Dimensions



Note : 1.All dimension are in millimeter tolerance is $\pm 0.2\text{mm}$ unless otherwise noted.
2.Specifications are subject to change without notice.

Recommended Soldering Pad Dimensions



Note : The tolerances unless mentioned is $\pm 0.2\text{mm}$, Angle ± 0.5 Unit = mm.



Absolute Maximum Ratings at Ta=25

Parameter	Symbol	Ratings	UNIT
Power Dissipation	PD	80	mW
Peak Forward Current Duty 1/10@10KHz	IFP	100	mA
Forward Current	IF	20	mA
Reverse Current @5V	Ir	50	μ A
Electrostatic Discharge	ESD	±500	V
Operating Temperature	Topr	- 40 ~ + 85	
Storage Temperature	Tstg	- 40 ~ + 90	
Soldering Temperature	Tsol	Max 260 for 10 sec Max	

Typical Electrical & Optical Characteristics (Ta=25)

Items	Symbol	Min.	Typ.	Max.	Unit	Condition
Chromaticity Coordinates	CIE_x	0.28	----	0.31	----	IF=20mA
	CIE_y	0.255	----	0.340	----	
Luminous Intensity	Iv	1500	----	----	mcd	IF=20mA
Spectral Line Half-Width		----	30	----	nm	IF=20mA
Forward Voltage	V _F	2.8	----	3.6	V	IF=20mA
Viewing Angle	2 1/2	----	120	----	deg	IF=20mA

- Note : 1.The forward voltage data did not including ±0.1V testing tolerance.
2. The luminous intensity data did not including ±10% testing tolerance.



Brightness Code For Visible SMD

Grop	(mcd) at 20mA	
	MIN	MAX
W23 W24	1500	1600
W25 W31	1600	1700
W32 W33	1700	1800
W34 W35	1800	1900
W36 W37	1900	2000
X11 X12	2000	2100
X13 X14	2100	2200
X15 X16	2200	2300
X17 X18	2300	2400

Forward Voltage Classification (at 20mA)

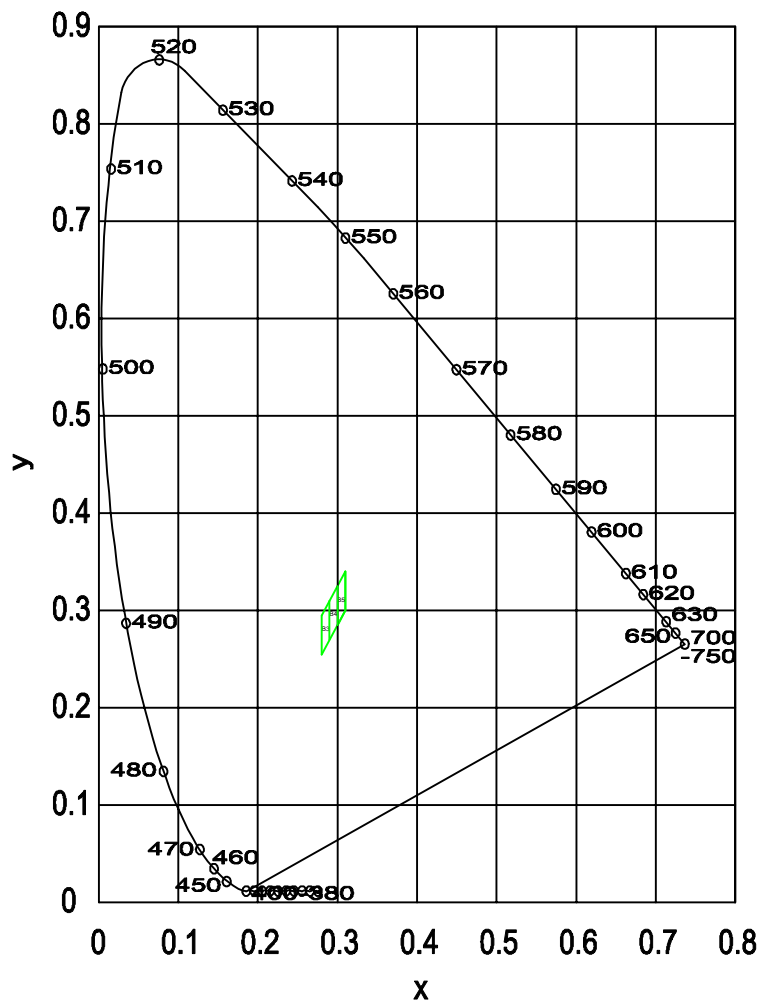
BIN CODE	VF(V)	
	MIN	MAX
1	2.8	2.9
2	2.9	3
3	3	3.1
4	3.1	3.2
5	3.2	3.3
6	3.3	3.4
7	3.4	3.5
8	3.5	3.6



. Chromaticity Coordinates Specifications for Bin Grading

BIN	X	Y
B3	0.28	0.295
	0.28	0.255
	0.29	0.270
	0.29	0.310
B4	0.29	0.310
	0.29	0.270
	0.30	0.285
	0.30	0.325
B5	0.30	0.325
	0.30	0.285
	0.31	0.300
	0.31	0.340

. CIE Chromaticity Diagram





Typical Electro-Optical Characteristics Curve

WK CHIP

Fig.1 Forward current vs. Forward Voltage

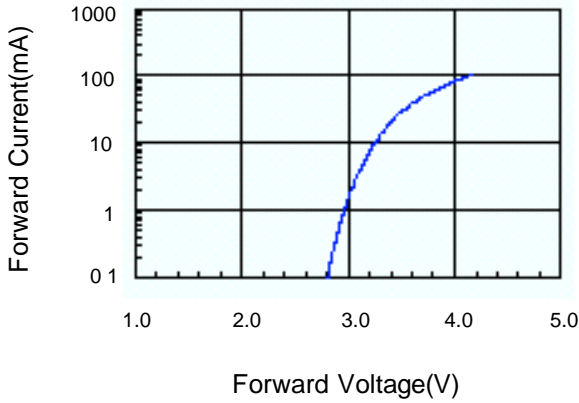


Fig.2 Relative Intensity vs. Forward Current

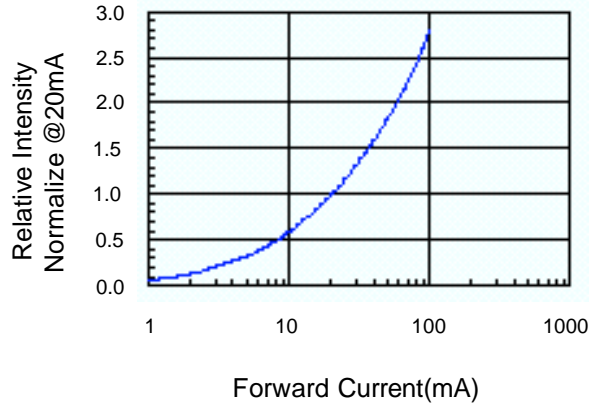


Fig.3 Forward Voltage vs. Temperature

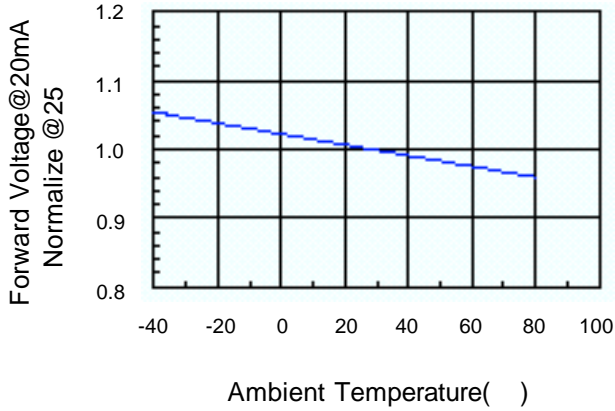


Fig.4 Relative Intensity vs. Temperature

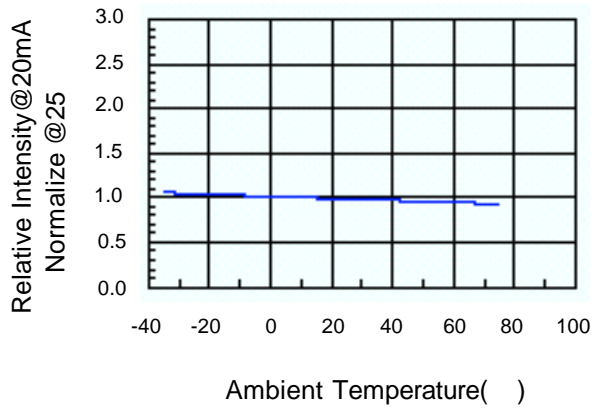
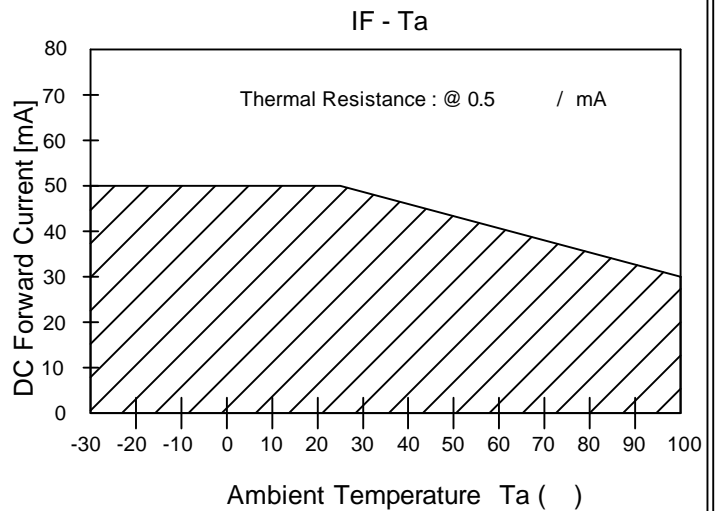
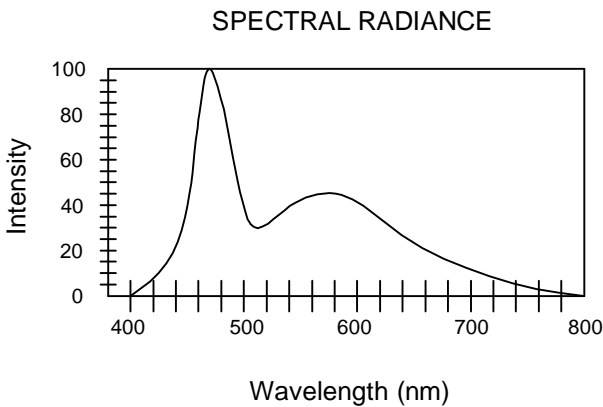
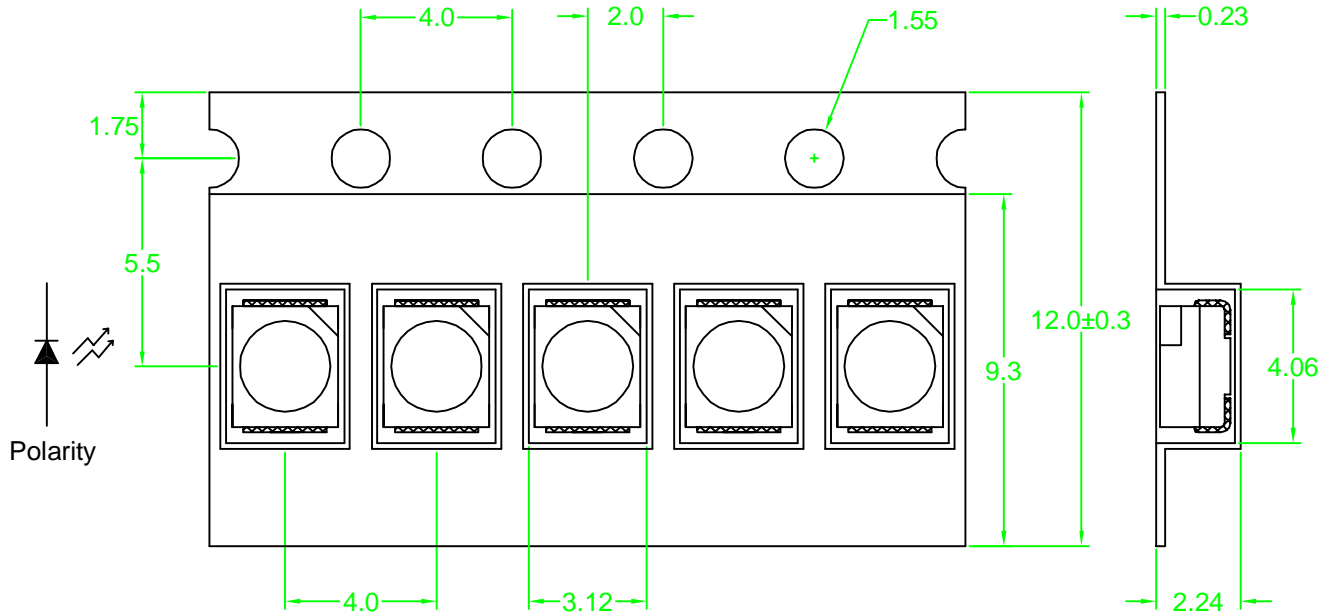


Fig.5 Luminous Spectrum (Ta=25 °C)



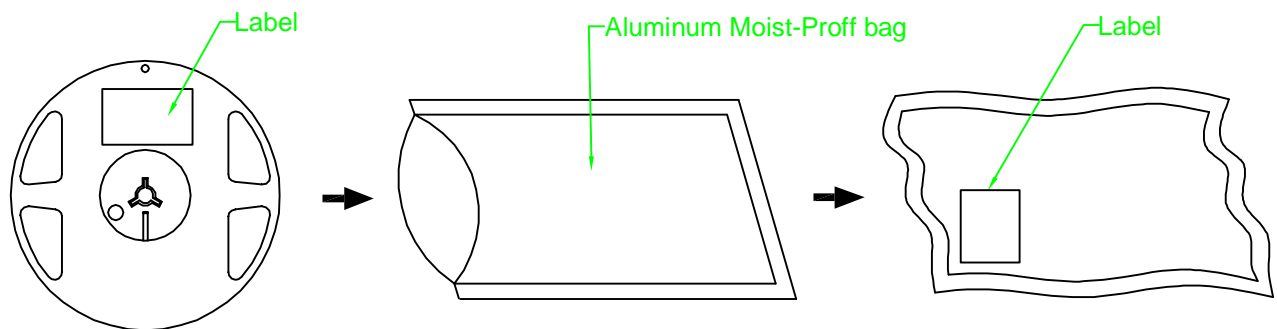


Carrier Type Dimensions



Note : The tolerances unless mentioned is $\pm 0.1\text{mm}$, Angle ± 0.5 . Unit=mm.



• Packing Specifications



Part No.	Description	Quantity/Reel
LWK9553/TR1/A-1-A02	12.0mm tape,7" reel	1500 devices



Label Explanation

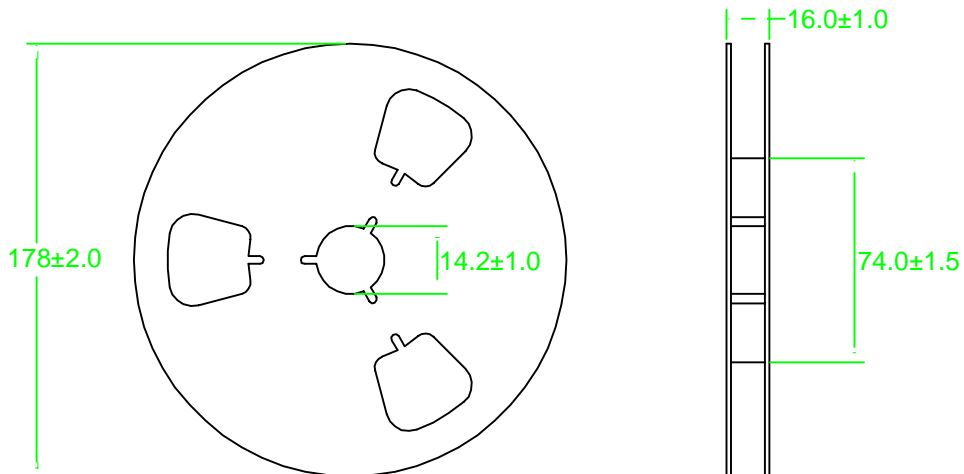
 立碁電子工業股份有限公司 LIGITEK ELECTRONICS CO., LTD.		
PART NO. : LWK9553/TR1/A-1-A02		
LOT NO. : 93000499		
Q'TY(PCS) : 1500 PCS		Vf : 3.0 - 3.1
BIN/HUE : W36W37 / B3		

BIN : Luminous Intensity

HUE : Chromaticity Coordinates
(CIE_x , CIE_y)

3.0 - 3.1 : Forward Voltage

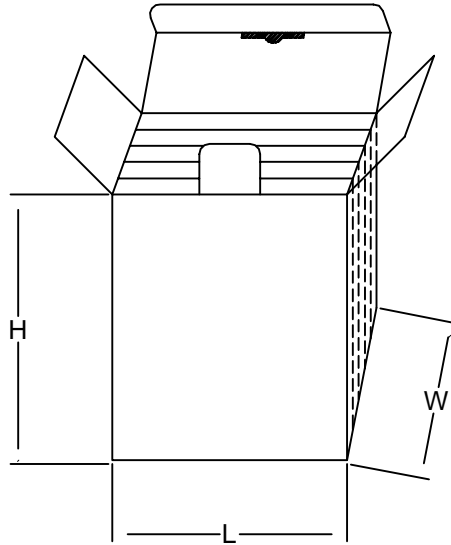
Reel Dimensions



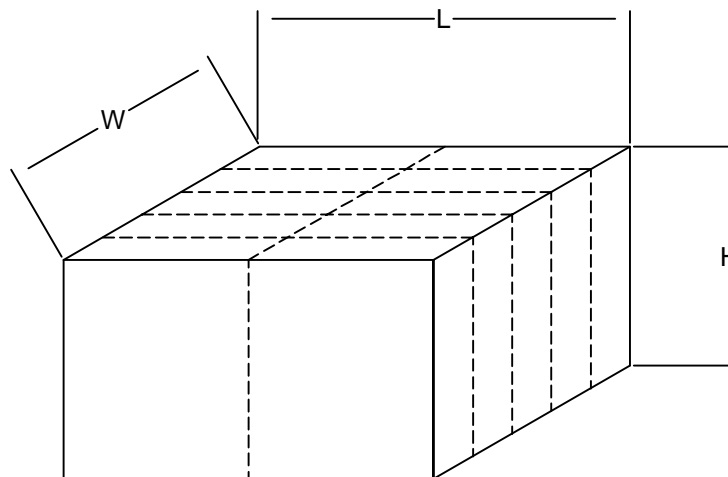


Box Explanation

- 1. 5 BAG / INNER BOX
- 2. INNER BOX SIZE : L X W X H 23cm X 8.5cm x 26cm



- 3. 10 INNER BOXES / CARTON
- 4. CARTON SIZE : L X W X H 49cm X 46cm x 29cm

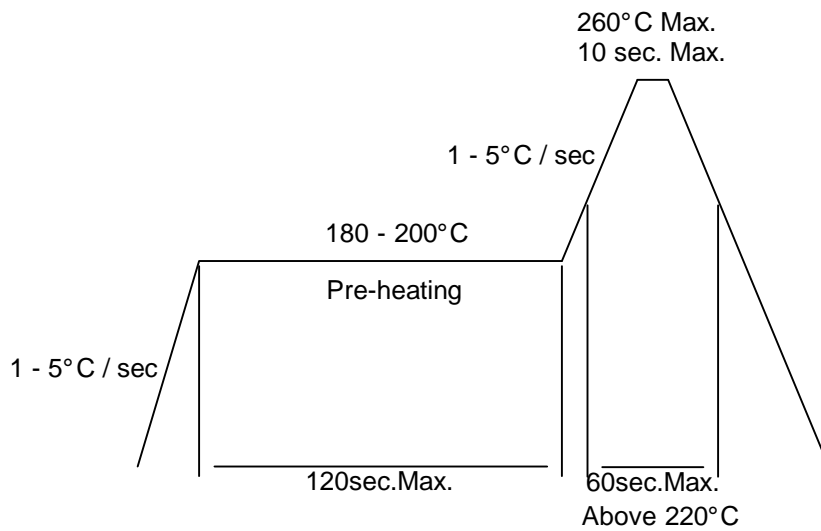




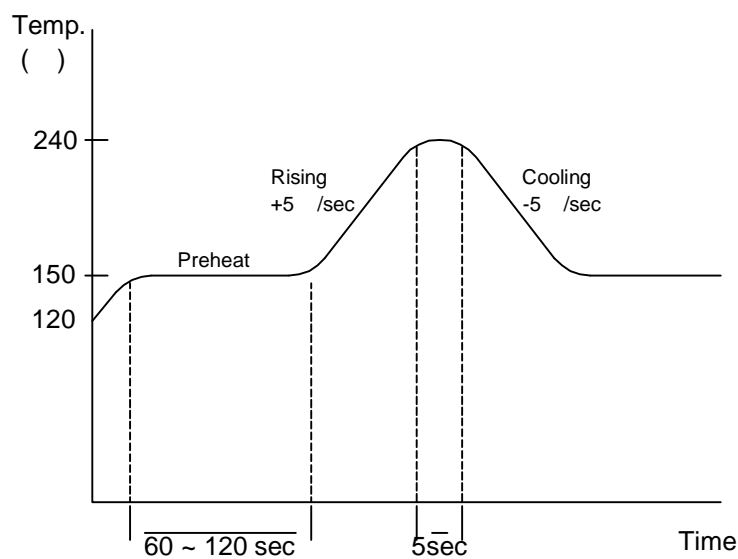
Soldering Iron:

Basic spec is 10 seconds when 260 .
Power dissipation of iron should be smaller than 25W,and temperature should be controllable.
Surface temperature of the device should be under 280 for 3 seconds.

Reflow Temp/Time(Pb-free)



Reflow Temp/Time(Lead solder)



Note:

- 1.Reflow soldering should not be done more than two times.
- 2.When soldering,do not put stress on the LEDs during heating.
- 3.After soldering,do not warp the circuit board.



Precautions For Use:

Storage time:

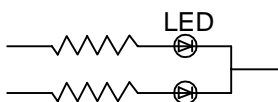
- 1.The operation of Temperatures and RH are : 5 ~35 ,RH60%.
- 2.Once the package is opened, the products should be used within a week.
Otherwise, they should be kept in a damp proof box with descanting agent.
Considering the tape life, we suggest our customers to use our products within a year(from production date).
- 3.If opened more than one week in an atmosphere 5 ~ 35 ,RH60%, they should be treated at 60 ±5 for 15hrs.

Drive Method:

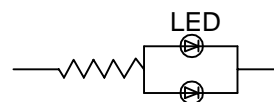
LED is a current operated device, and therefore, requirer some kind of current limiting incorporated into the driver circuit. This current limiting typically takes the form of a current limiting resistor placed in series with the LED.

Consider worst case voltage variations than could occur across the current limiting resistor. The forward current should not be allowed to change by more than 40 % of its desired value.

Circuit model A



Circuit model B



(A) Recommended circuit.

(B) The difference of brightness between LED could be found due to the VF-IF characteristics of LED.

Cleaning:

Use alcohol-based cleaning solvents such as isopropyl alcohol to clean the LED.

ESD(Electrostatic Discharge):

Static Electricity or power surge will damage the LED. Use of a conductive wrist band or anti-electrosatic glove is recommended when handing these LED. All devices, equipment and machinery must be properly grounded.



Reliability Test:

(1) Test items and results

Classification	Test Item	Test Condition	Sample Size
Endurance Test	Operating Life Test	1. Ta=Under Room Temperature As Per Data Sheet Maximum Rating. 2. If=20mA 3. t=1000 hrs	22
	High Temperature Storage Test	1. Ta=105 ±5 2. t=1000 hrs	22
	Low Temperature Storage Test	1. Ta=-40 ±5 2. t=1000 hrs	22
	High Temperature High Humidity Storage Test	1. IR-Reflow In-Board, 2 Times 2. Ta= 60 ±5 3. RH=90%~95% 4. t= 1000 hrs ± 2hrs	22
Environmental Test	Thermal Shock Test	1. IR-Reflow In-Board, 2 times 2. Ta=105 ±5 & -40 ±5 (30min) (30min) 3. total 100 cycles	22
	Reflow Soldering Test	1. T.Sol=260 ±5 2. Dwell Time= 10 Sec.Max.	22
	Temperature Cycling	1. 105 ~ 25 ~ -40 30mins 15mins 30mins 2. 100 Cycles	22

(2) Criteria for judging the damage

Item	Symbol	Test Conditions	Criteria for Judgement	
			Min.	Max.
Forward Voltage	Vf	If=20mA	-	U.S.L x1.2
Reverse Current	Ir	Vr=5V	-	U.S.L x2.0
Luminous Intensity	Iv	If=20mA	L.S.L x 0.5	-

Note:

- 1. U.S.L.: Upper Standard Level.
- 2. L.S.L.: Lower Standard Level.